



A Coastal Living
A ShaSmit Developers Initiative

ALIBAUG

STRATEGIC PARTNER

OSPREY NEST
REAL ESTATE ADVISORS

www.ceruleanalibaug.com



Discover an exclusive Cerulean villa project where modern living meets coastal serenity. Just minutes from the beach, Cerulean offers thoughtfully designed villas with spacious layouts, premium finishes, and contemporary architecture. Surrounded by coconut groves and fresh sea breeze, it's the perfect weekend retreat—luxurious, private, and timeless. Curated streets interwoven with community spaces and landscaped garden inserts

ALHIBAU G REVDANDA



The Oceanic Boulevard

Alibaug, a cluster of coastal villages set amidst coconut and betelnut plantations, offers beaches, forts, and serene wadi homes. Among them lies Revdanda — home to our curated community, CERULEAN.

A wide panoramic image of a sunset over a body of water. The sun is a bright, glowing orb in the center, with its light reflecting on the water's surface. The sky is a mix of soft orange, yellow, and light blue. In the foreground, there are clusters of small, vibrant blue flowers with yellow centers, and some tall, thin grasses. Green palm fronds are visible in the upper left and right corners, framing the scene.

Chase Sunrises & Celebrate Sunsets

THE VILLA

FRONT VIEW SCHEMATIC



GROUND LEVEL SCHEMATIC



RERA Carpet Area Statement

Ground Floor	579.0 sq.ft	54.0 sq.m
First Floor	418.0 sq.ft	39.0 sq.m
Staircase	150.0 sq.ft	14.6 sq.m
Bathroom Area	167.0 sq.ft	15.6 sq.m
Balcony Area	353.0 sq.ft	33.0 sq.m
	1667.0 sq.ft	



FIRST LEVEL SCHEMATIC



Usable Area + Terrace & Deck

Ground Floor	579.0 sq.ft	54.0 sq.m
First Floor	418.0 sq.ft	39.0 sq.m
Staircase	150.0 sq.ft	14.6 sq.m
Utility	36.6 sq.ft	3.6 sq.m
Bathroom Area	167.0 sq.ft	15.6 sq.m
Terrace Lobby	140.0 sq.ft	13.0 sq.m
Balcony Area	353.0 sq.ft	33.0 sq.m
Terrace + Porch Area	461.0 sq.ft	43.0 sq.m
Covered Parking	160.0 sq.ft	15.0 sq.m
	2464.0 sq.ft	





BOUTIQUE FAMILY LIVING SPACE



GROUND & FIRST
TYPICAL BED SUITE





BEDROOM SUITE

- Wrap Around Sundeck
- Walk Out Porch Deck
- Wooden RafterS Ceiling
- Atrium Facing Glass Wall
- Walk In Bathroom
- Lobby Seating



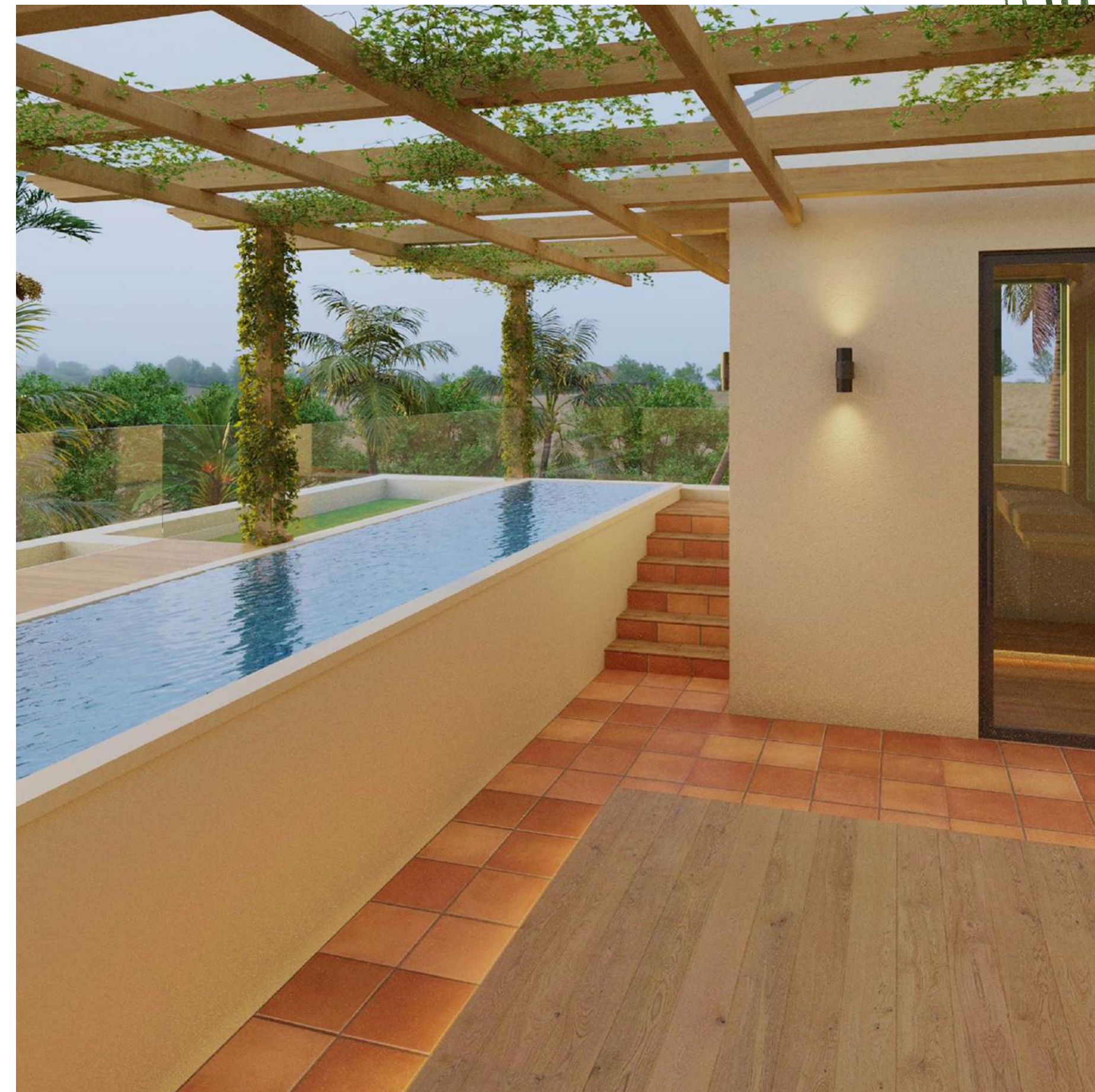
MASTER SUITE:
BOUTIQUE SUNDECKS



TERRACE
LEVEL
SCHEMATIC



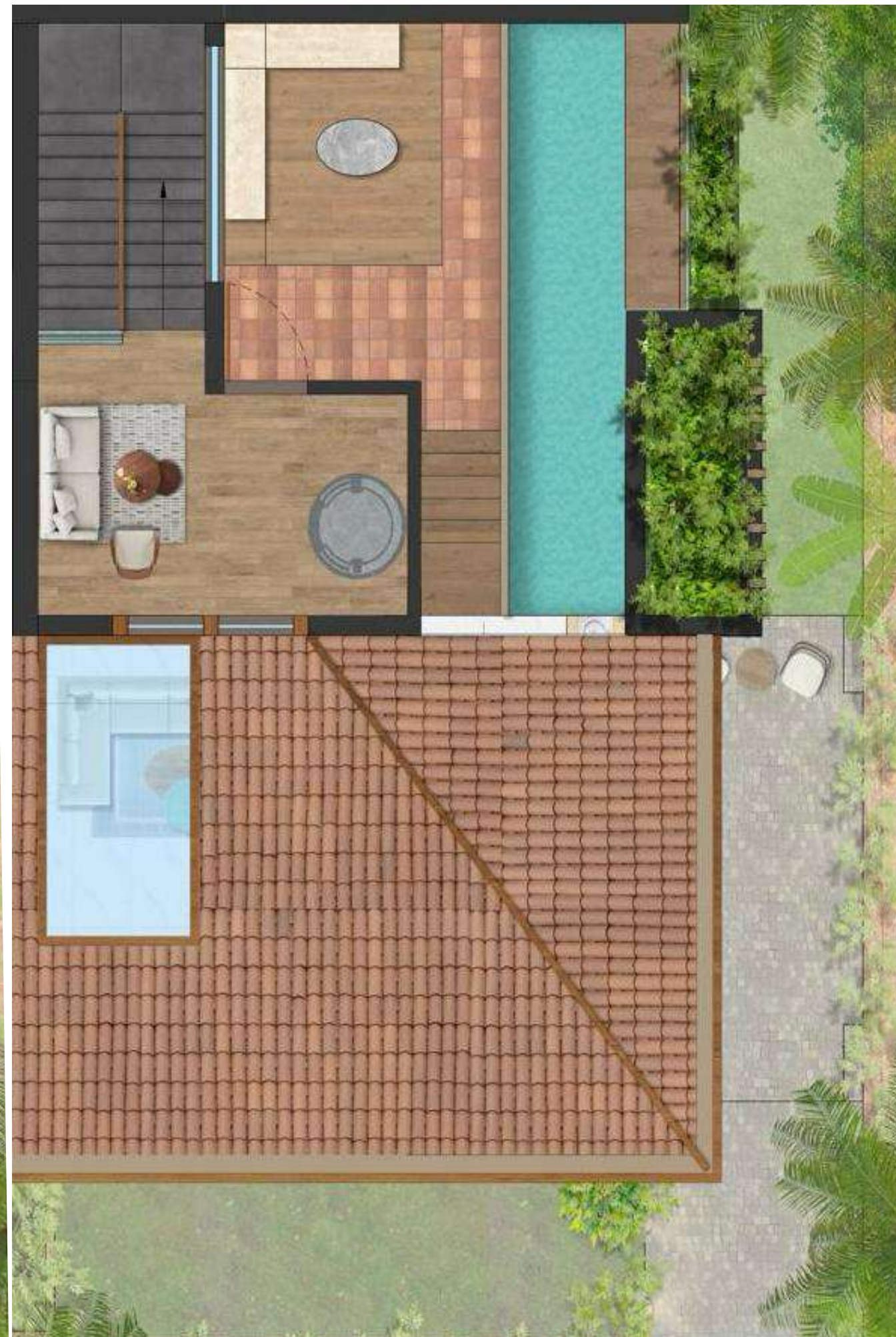
Lounge Seating With Raised Wooden Deck



Pergola Covered Plunge Pool



TERRACE LEVEL SCHEMATIC

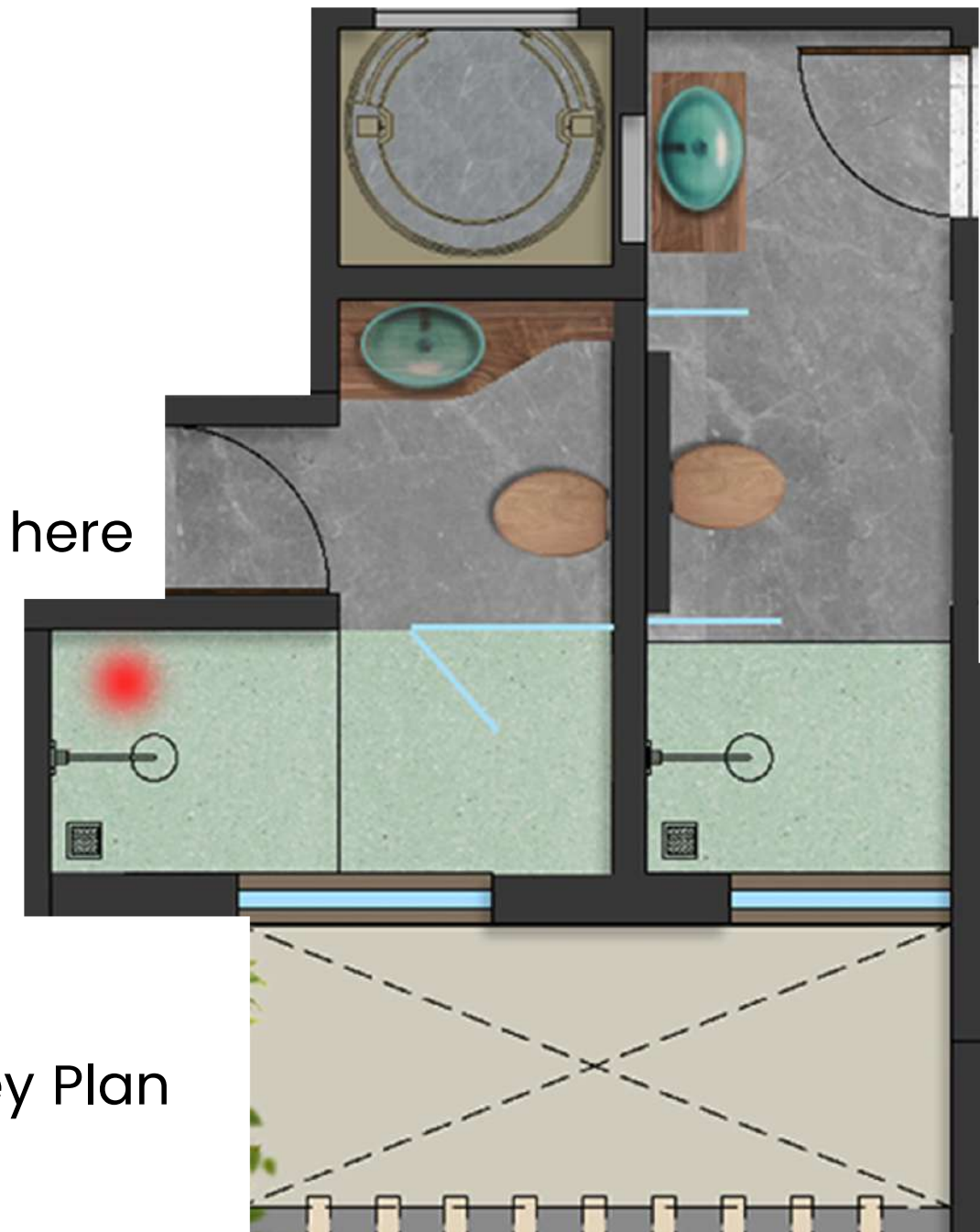


DESIGNER BATH ROOM

- Master Bathroom
- Shower Panel
- Compact Tub
- Tv
- Air Con

You are here

Key Plan



LUXURY UNIT – SPECIFICATIONS



LIVING ROOM

- Furniture: 1+2+3 seater sofas + 2 Side table + 1 Center table.
- TV (65 Inches) + 2 Ton Aircon.
- Double Height Atrium & Laterite display
- Atrium – Skylit with Glass Roof
- 2 seated Verandah
- Automatic Curtains



BEDROOM 1 & 2

- 3 Door Wardrobe.
- 1.5 Ton Air Conditioner.



MASTER BEDROOM 3

- 2 x 2 Door Wardrobe.
- 1.5 Ton Air Conditioner.
- Walkout Terrace above Porch with sitting set & swing.



KITCHEN

- Modular Kitchen
- HOB & Burner
- Fridge / Microwave / Water Filter



FRONT GARDEN

- Landscaped in Artificial – 4 foxtail Palm Trees
- Wall light on inside surface of boundary & wall lights on th Villa



TERRACE

- Lift access Lobby with furniture
- Pergola with raised platform seating
- Spiral Terrace to Viewing Deck – 8.2 Mtr.



DRIVEWAY

- Covered Porch for Parking.
- Designer 9 feet wide gate in MS.
- Designer Tiles for driveway



BATH ROOM

- All bathroom with Fittings of Jaguar or similar make.

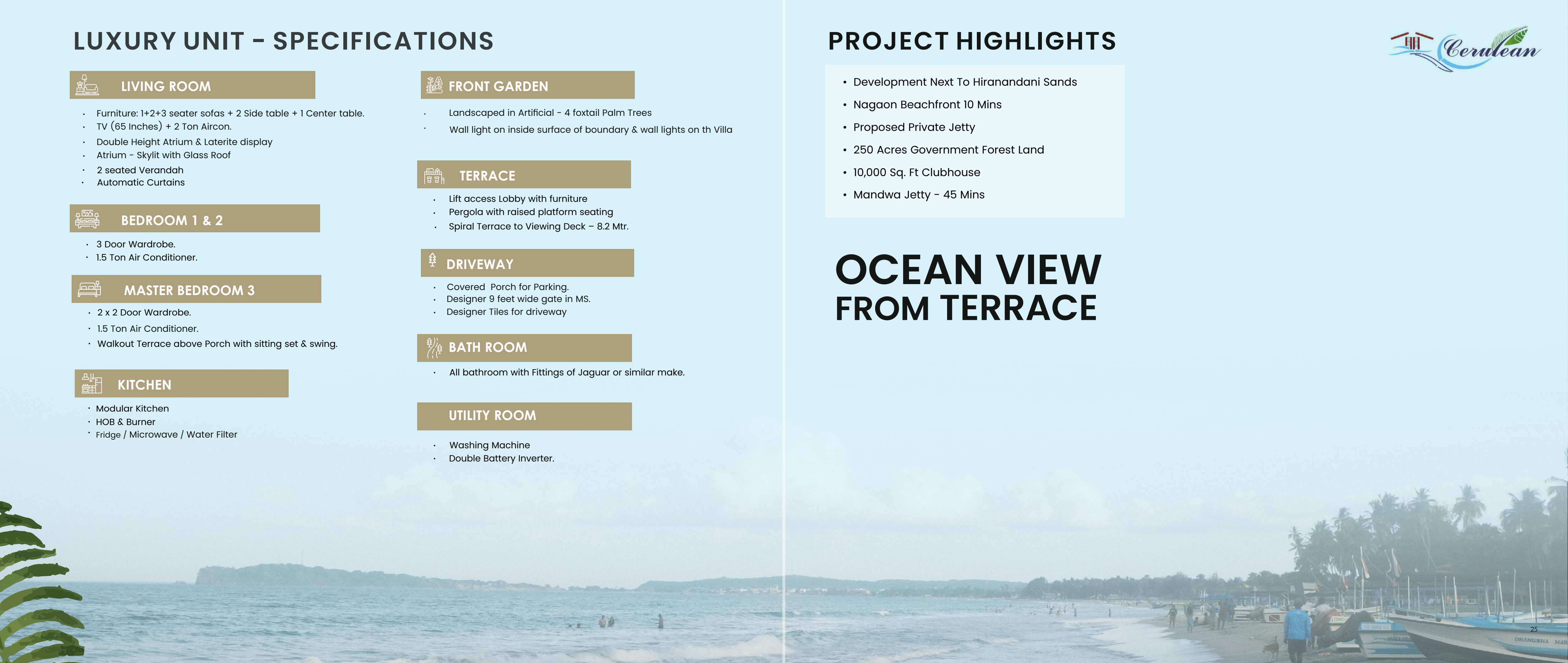
UTILITY ROOM

- Washing Machine
- Double Battery Inverter.

PROJECT HIGHLIGHTS

- Development Next To Hiranandani Sands
- Nagaon Beachfront 10 Mins
- Proposed Private Jetty
- 250 Acres Government Forest Land
- 10,000 Sq. Ft Clubhouse
- Mandwa Jetty – 45 Mins

OCEAN VIEW FROM TERRACE



THE CLUSTER

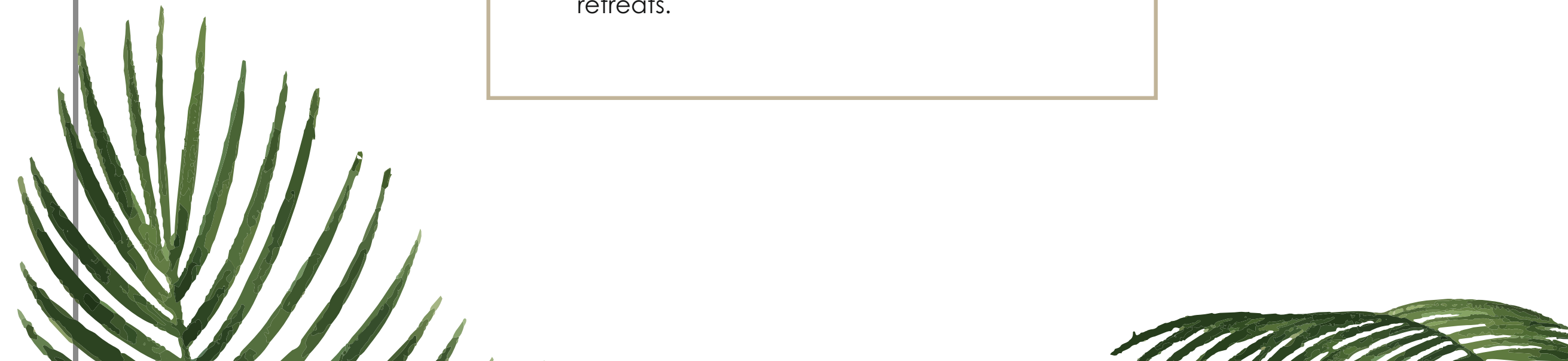
Come Together. Stay Connected
Community Living



A COASTAL VILLA LIFESTYLE.

THE CLUSTER 4 TOWN HOUSES

A stylish 3 BHK town house designed to bring together modern comfort and Alibaug's coastal charm. With spacious interiors, wide balconies, and beautifully landscaped surroundings, these villas create the perfect balance of privacy and community living. Surrounded by greenery and just minutes away from Alibaug's pristine beaches, this is your serene escape for both everyday living and weekend retreats.





Artistic Impression

3 BHK TOWN HOUSES



A tropical sunset scene with a calm sea and a clear sky. The sun is low on the horizon, casting a warm glow. Two green palm fronds are visible: one in the top left corner and one in the bottom center.

Your Private Sanctuary Awaits.

A tropical sunset scene with a calm sea and a clear sky. The sun is low on the horizon, casting a warm glow. Several palm trees are visible on the right side of the frame, with their fronds reaching towards the top right corner.

THE PROJECT



“WHERE COASTAL
CHARM MEETS
MODERN LUXURY.”



A COASTAL VILLA COMMUNITY AT REVDANDA, ALIBAUG

Cerulean is an exclusive villa project designed for those who seek the perfect blend of modern living and coastal charm. Nestled in the serene village of Nagaon, just moments away from the beach, Cerulean offers a private retreat amidst coconut groves and fresh sea breeze. Each villa is thoughtfully crafted with contemporary architecture, spacious layouts, and premium finishes, ensuring comfort and elegance at every corner. Surrounded by nature yet seamlessly connected to the city, Cerulean redefines the idea of a weekend home—where relaxation, luxury, and timeless living come together. With Alibaug just a short drive or ferry ride from Mumbai, Cerulean gives you the privilege of escaping the city’s hustle while staying connected to it. It’s not just a home, but a lifestyle by the sea.

EAST END VISUALIZATION



CHAPTER 1

24 DUPLEX BESPOKE TOWN HOUSE
CLUBHOUSE | LANDSCAPED GARDEN | KIDS PLAY COURT



Artistic Impression

**Where Relaxation
Finds Its Rhythm.**



THE CLUB HOUSE



CAPTAIN SOAJ CLUB

Leisure community spaces: Pool: Gym: Restaurant: Lounges: Gazebo



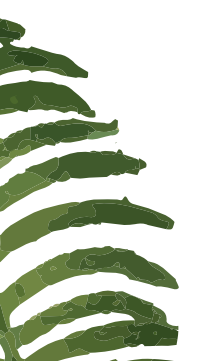


“DINE IN
STYLE,
RELAX IN
COMFORT.”



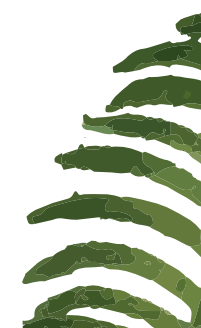


RIDE THE
WAVE OF
FITNESS





RIDE THE WAVES,
FEEL THE RUSH





Arrive. Live. Belong.

THE DESTINATION

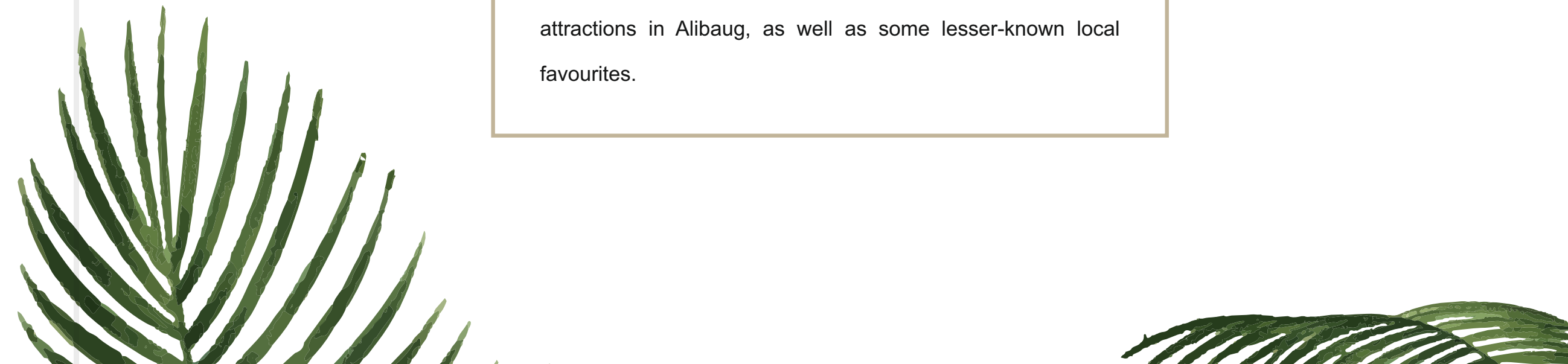


ALIBAUG – WHERE HISTORY MEETS THE SEA

Cerulean is a charming coastal town of coconut and betelnut plantations, scenic beaches, and rustic villages. Just 100 km from Mumbai — reachable by a three-hour drive or a quick ferry ride— it's the perfect weekend escape. Known for its sandy shores, emerald forests, and historic forts, Alibaug was once the naval base of Maratha Admiral Kanhoji Angre. The famous Kolaba Fort still stands as a reminder of its glorious past. Legend says the town was named after a wealthy Israelite, Ali, who owned vast plantations here. Today, Alibaug blends heritage, leisure, and natural beauty—making it both a travellers delight and a sought-after destination for holiday homes.

Alibaug is the seat of District Administration of Raigad (formerly Kolaba) district since 1852.

The following pages list a number of the most popular area attractions in Alibaug, as well as some lesser-known local favourites.





KASHID & MURUD BEACHES

Kashid and Murud offer two contrasting beach experiences perfect for a weekend. Kashid, a 3 km stretch of white sand 20 km from Alibaug, is lively with water sports and a Chowpatty-like vibe. Just 15 km ahead, Murud is quieter, known for its forts, tombs, stunning sunsets, and rare baobab trees planted by early African settlers.



NAGAON BEACH

Akshi and Nagaon beaches showcase two sides of Alibaug. Akshi is a quiet stretch of sand, perfect for bird watching, while Nagaon, famed as the shooting spot of Sagar, is now a hub for water sports. Just 3–5 km from Alibag, both offer contrasting coastal experiences.



VARSOLI BEACH

Varsoli, on the outskirts of Alibaug, is a quiet beach with white sand, clean water, and coconut–casuarina groves, making it a peaceful escape.



KOLABA FORT
– Alibaug’s timeless sentinel by the sea.”



KHANDERI FORT

Built in 1678 on an island off Thal beach near Alibaug, this fort was long controlled by Admiral Angre. Now managed by the Bombay Port Trust, it can be visited by local boats with prior permission.



REVDANDA BEACH

Revdanda Beach is a very isolated beach in this region. The sand is black in colour, which gives it a unique look

PLACES OF WORSHIP

SRI RAMAESHWAR MANDIR



VIKRAM VINAYAK MANDIR
(Birla Temple)



KANAKESHWAR TEMPLE





Ways to Reach

- Sewri : Atal Setu
- Gateways Of India
- Chembur (Mumbai)
- Panvel (Navi Mumbai)
- Karanja to Jetty at Revdanda
- Mandwa Jetty
- Alibaug Bus Station
- Proposed Jetty



Alibaug Beaches

- Varsoli Beach
- Akshi & Nagaon Beaches
- Revdanda Beach
- Korlai Beach
- Kashid & Murud Beaches



Alibaug Fort

- Kolabafort
- Revdanda Aagarkot
- Lighthouse at Khandheri Island with Jetty
- Kasa (padmadurga) Fort
- Murud Janjira is a Unesco World Heritage Site
- Korlai Fort
- Underi
- Sagargadh
- Hirakot





Site Address:

Survey No. 20 /2, Village Revdanda,
Palav, Taluka Alibaug, District Raigad, Maharashtra

Corporate Office Address:

Jasmino Corporation Shree Sawan Knowledge Park 8 Floor
Plot No D 507TTC Industrial Area Navi Mumbai 400705MH IN

Mobile: +91 – 90821 36976

Email: sales@cerulean.com

www.cerulean.com

STRATEGIC PARTNER

OSPREY NEST
REAL ESTATE ADVISORS